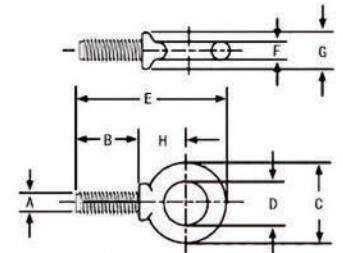


JTR-BN08 Shoulder Type Machinery Eye Bolts S-279

Product Code	Size	W. L. L. (Lbs)	Dimensions(in)									Weight Each (kg/pc)
	(in)		A	B	C	D	E	F	G	H		
JTR-BN0801	1/4×1	650	0.25	1	0.88	0.5	1.94	0.19	0.47	0.5	0.023	
JTR-BN0802	5/16×11/8	1200	0.31	1.13	1.12	0.62	2.38	0.25	0.56	0.69	0.028	
JTR-BN0803	3/8×11/4	1550	0.38	1.25	1.38	0.75	2.72	0.31	0.66	0.78	0.057	
JTR-BN0804	1/2×11/2	2600	0.5	1.5	1.75	1	3.38	0.38	0.91	1	0.114	
JTR-BN0805	5/8×13/4	5200	0.63	1.75	2.25	1.25	4.19	0.5	1.12	1.31	0.227	
JTR-BN0806	3/4×2	7200	0.75	2	2.75	1.5	4.94	0.62	1.38	1.56	0.398	
JTR-BN0807	7/8×21/4	10600	0.88	2.25	3.25	1.75	5.72	0.75	1.56	1.84	0.715	
JTR-BN0808	1×21/2	13300	1	2.25	3.75	2	6.47	0.88	1.81	2.09	0.991	
JTR-BN0809	11/4×3	21000	1.25	3	4.5	2.25	7.72	1	2.28	2.47	1.727	
JTR-BN0810	11/2×31/2	24000	1.5	3.5	5.5	3	9.25	1.25	2.75	3	3.182	



JTR-BN09 Shoulder Nut Eye Bolts G-277

Product Code	Size	W. L. L. (Lbs)	Dimensions(in)										Weight Each (kg/pc)
	(in)		A	B	C	D	E	F	G	H	J		
JTR-BN0901	1/4×2	650	0.25	0.5	0.88	0.19	1.5	2	2.94	0.5	0.47	0.03	
JTR-BN0902	1/4×4	650	0.25	0.5	0.88	0.19	2.5	4	4.94	0.5	0.47	0.041	
JTR-BN0903	5/16×21/4	1200	0.31	0.62	1.12	0.25	1.5	2.25	3.5	0.69	0.56	0.057	
JTR-BN0904	5/16×41/4	1200	0.31	0.62	1.12	0.25	2.5	4.25	5.5	0.69	0.56	0.085	
JTR-BN0905	3/8×21/2	1550	0.38	0.75	1.38	0.31	1.5	2.5	3.97	0.78	0.66	0.097	
JTR-BN0906	3/8×41/2	1550	0.38	0.75	1.38	0.31	2.5	4.5	5.97	0.78	0.66	0.115	
JTR-BN0907	1/2×31/4	2600	0.5	1	1.75	0.38	1.5	3.25	5.12	1	0.91	0.194	
JTR-BN0908	1/2×6	2600	0.5	1	1.75	0.38	3	6	7.88	1	0.91	0.258	
JTR-BN0909	5/8×4	5200	0.62	1.25	2.25	0.5	2	4	6.44	1.31	1.12	0.312	
JTR-BN0910	5/8×6	5200	0.62	1.25	2.25	0.5	3	6	8.44	1.31	1.12	0.465	
JTR-BN0911	3/4×41/2	7200	0.75	1.5	2.75	0.62	2	4.5	7.44	1.56	1.38	0.657	
JTR-BN0912	3/4×6	7200	0.75	1.5	2.75	0.62	3	6	8.94	1.56	1.38	0.761	
JTR-BN0913	7/8×5	10600	0.88	1.75	3.25	0.75	2.5	5	8.46	1.84	1.56	1.023	
JTR-BN0914	1×6	13300	1	2	3.75	0.88	3	6	9.97	2.09	1.81	1.665	
JTR-BN0915	1×9	13300	1	2	3.75	0.88	4	9	12.97	2.09	1.81	1.92	
JTR-BN0916	11/4×8	21000	1.25	2.5	4.5	1	4	8	12.72	2.47	2.28	2.955	
JTR-BN0917	11/4×12	21000	1.25	2.5	4.5	1	4	12	16.72	2.47	2.28	3.614	
JTR-BN0918	11/2×15	24000	1.5	3	5.5	1.25	6	15	20.75	3	2.75	6.477	

