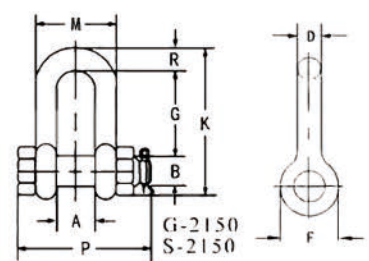


JTR-SE14 U.S. Bolt Type Safety Chain D Shankles

Product code	Wight each	Nominal Size	WWL	Dimensions(mm)												
				A	B	C	D	E	F	G	H	L	M	P		
2150	(kg)	(in)	(t)													
JTR-SE1401	-	3/16	1/3	9.65	6.35	22.4	4.85	15.2	14.2	-	37.3	24.9	-	32.77		
JTR-SE1402	0.06	1/4	1/2	11.9	7.85	28.7	6.35	19.8	15.5	19.05	46.7	32.5	15.49	39.62		
JTR-SE1403	0.1	5/16	3/4	13.5	9.65	31	7.85	21.3	19.1	25.4	53	37.3	19.05	46.23		
JTR-SE1404	0.15	3/8	1	16.8	11.2	36.6	9.65	26.2	23.1	30.99	63	45.2	23.11	55.12		
JTR-SE1405	0.22	7/16	1 1/2	19.1	12.7	42.9	11.2	29.5	26.9	36.09	74	51.5	41.15	63.75		
JTR-SE1406	0.34	1/2	2	20.6	16	47.8	12.7	33.3	30.2	41.04	83.5	58.5	45.97	71.12		
JTR-SE1407	0.67	5/8	3 1/4	26.9	19.1	60.5	16	42.9	38.1	50.8	106	74.5	58.67	89.66		
JTR-SE1408	1.14	3/4	4 3/4	31.8	22.4	71.5	19.1	51	46	60.45	126	89	69.85	103.38		
JTR-SE1409	1.74	7/8	6 1/2	36.6	25.4	84	22.4	58	53	71.37	148	102	81.03	119.63		
JTR-SE1410	2.52	1	8 1/2	42.9	28.7	95.5	25.4	68.5	60.5	81.03	167	119	93.73	134.87		
JTR-SE1411	3.45	1-1/8	9 1/2	46	31.8	108	28.7	74	68.5	90.93	190	131	103.1	149.86		
JTR-SE1412	4.9	1-1/4	12	51.5	35.1	119	31.8	82.5	76	100.08	210	146	115.0	165.35		
JTR-SE1413	6.24	1-3/8	13 1/2	57	38.1	133	35.1	92	84	111.25	233	162	127	183.13		
JTR-SE1414	8.39	1-1/2	17	60.5	41.4	146	38.1	98.5	92	122.17	254	175	136.0	196.34		
JTR-SE1415	14.2	1-3/4	25	73	51	178	44.5	127	106	146.05	313	225	162.0	229.87		
JTR-SE1416	21.2	2	35	82.5	57	197	51	146	122	171.45	348	253	184.1	264.41		
JTR-SE1417	38.6	2-1/2	55	105	70	267	66.5	184	145	203.2	453	327	238.2	344.42		
JTR-SE1418	56	3	85	127	82.5	330	76	200	165	215.9	546	365	279.4	419.1		
JTR-SE1419	-	3-1/2	120	133	95.5	372	92	229	203	-	626	419	-	482.6		
JTR-SE1420	-	4	150	140	108	368	104	254	229	-	653	468	-	-		



JTR-SE15 U.S. Trawing Shackle With Square Head Screw Pin(G2131)

Product Code	Nominal size	Working Load Limit	Weight Each	Dimensions(mm)					
				H	B	Diameter		Tolerance Plus/Minus	
	(in.)	(t)	(kg)			Pin	Outside of Eye	Length	Width
JTR-SE1501	1/4	1/2	0.055	7/8	15/32	5/16	5/8	1/16	1/32
JTR-SE1502	5/16	3/4	0.064	1-1/32	1/2	3/8	3/4	1/16	1/32
JTR-SE1503	3/8	1	0.118	1-1/4	11/16"	7/16	29/32	1/8	1/16
JTR-SE1504	7/16	1 1/2	0.136	1-13/32	23/32	1/2	1-1-16	1/8	1/16
JTR-SE1505	1/2	2	0.223	1-5/8	13/16	5/8	1-3-16	1/8	1/16
JTR-SE1506	5/8	3 1/4	0.5	2	11/16	3/4	1-9-16	1/8	1/16
JTR-SE1507	3/4	4 3/4	1	2-3/8	1-1/4	7/8	1-7/8	1/4	1/16
JTR-SE1508	7/8	6 1/2	1.491	2-13/16	17/16	1	2-1/8	1/4	1/16

