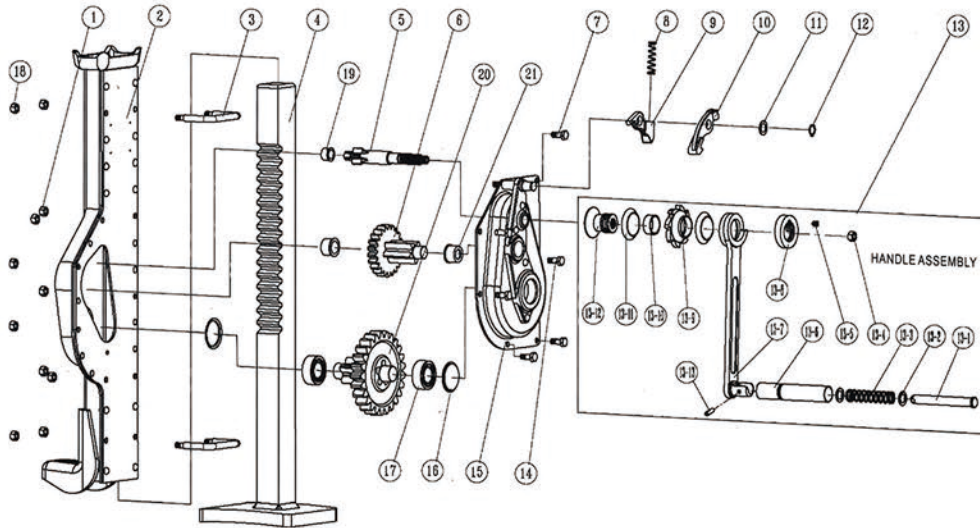


JTMJ-B Model Mechanical Jack



JTMJ-B/JTMJ-C Model Mechanical Jack



JTMJ-B Model Mechanical Jack

Model	1.5t	3t	5t	10t	
Rated capacity (t)	1.5	3	5	10	10
Test load (KN)	18.4	36.8	61.3	122.5	122.5
Chain shake to lift full load (N)	150	280	280	560	560
Stroke (mm)	300	350	350	410	410
Min.lifting height(mm)	F	25	40	40	40
	H	600	735	735	805
Dimensions(mm)	A	163	197	189	250
	B	206	219	258	318
	C	289	316	355	523
	D	160	170	200	220
	E	55	60	70	86
	G	140	150	170	170
	K	113	127	127	248
	R	225	250	275	300
Net weight (kg)	14.8	23.3	31.3	49	

JTMJ-C Model Mechanical Jack

Model	1.5t	3t	5t	10t	16t	20t	
Rated capacity (t)	1.5	3	5	10	16	16	20
Test load (KN)	18.4	36.8	61.3	122.5	196	196	245
Chain shake to lift full load (N)	150	280	280	560	640	640	640
Stroke (mm)	300	350	350	410	410	410	410
Min.lifting height(mm)	H	725	725	800	800	860	860
	F	20	25	25	30	40	40
Dimensions(mm)	A	187.5	204.5	230	284	316.5	316.5
	B	205	220	241	308	345	360
	C	272.5	317	337	513	540	555
	D	155	155	180	200	230	230
	E	60	65	70	85	85	85
	G	130	130	150	170	195	195
	K	113	127	127	247.5	250	250
	R	225	250	250	300	300	380
Net weight (kg)	17	22	29.5	50	69	80	

Specifications

No.	Name of parts	Qty.	No.	Name of parts	Qty.
1	Hexagon locknut	6	13-5	Hexagon socket screws 8*8	1
2	Body assembly	1	13-6	Handle	1
3	Handle ring	2	13-7	Handle connecting rod	1
4	Rack assembly	1	13-8	Locknut	1
5	First driving shaft	1	13-9	Ratchet disk	1
6	First gear assembly	1	13-10	Brake spacer	1
7	Hexagon head bolts M8*20	4	13-11	Friction plate	2
8	Pawl spring	1	13-12	Brake spacer	1
9	Under-pawl	1	13-13	Spring straight pin 6*12	1
10	Over-pawl	1	14	Fixed position bolts	2
11	Pawl washer	1	15	Shroud assembly	1
12	Circlips for shaft 14	1	16	Bearing cover	2
13	Handle assembly	1	17	Bearing assembly	2
13-1	Spring shaft	1	18	Hexagon locknut M6	4
13-2	Washer	2	19	First bearing race	1
13-3	Handle spring	1	20	Second gear assembly	1
13-4	Hexagon locknut M12	1	21	Second bearing race	2