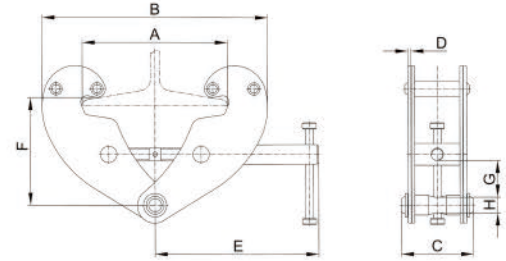
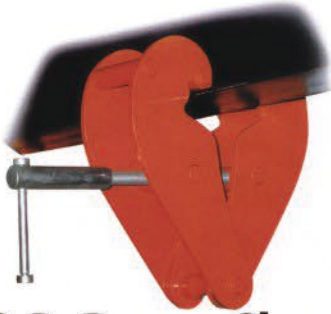
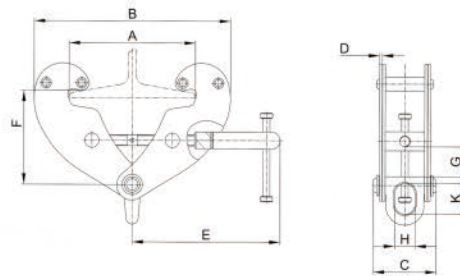


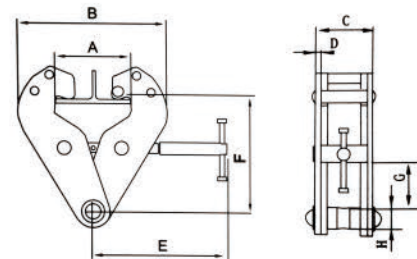
JTBC-A Beam Clamp



JTBC-B Beam Clamp



JTBC-C Beam Clamp



Specifications

Model	Rated Capacity (T)	Test Load (KN)	Adjustable Beam Width (mm)	Dimensions(mm)											Net Weight (kg)	
				A		B		C	D	E	F		G	H		K
				Max.	Min.	Max.	Min.				Max.					
JTBC-A-1T	1	12.5	75-230	240	192	367	94	4	194	102	154	22	20	-	4	
JTBC-A-2T	2	25	75-230	240	192	367	102	6	194	102	154	22	20	-	4.8	
JTBC-A-3T	3	37.5	80-345	355	243	520	132	8	241	133	223	38	22	-	9.8	
JTBC-A-5T	5	62.5	80-345	355	243	520	142	10	241	133	223	35	28	-	11.6	
JTBC-A-10T	10	125	90-350	360	272	532	180	12	284	133	234	47	38	-	17	
JTBC-B-1T	1	12.5	75-230	240	192	367	94	4	218	103	155	20	30	45	4.2	
JTBC-B-2T	2	25	75-230	240	192	367	102	6	218	103	155	20	30	45	5.1	
JTBC-B-3T	3	37.5	80-320	330	243	491	132	8	258	157	223	47	45	63	10.4	
JTBC-B-5T	5	62.5	80-320	330	243	491	142	10	258	157	223	47	45	63	12.2	
JTBC-B-10T	10	125	90-320	330	259	501	180	12	293	175	235	56	64	95	18.8	
JTBC-C-1T	1	12.5	75-230	260	200	360	64	5	215	102	155	25	18.5	-	4.5	
JTBC-C-2T	2	25	75-230	260	200	360	74	6	215	102	155	25	22	-	5	
JTBC-C-3T	3	37.5	80-320	354	235	490	103	8	278	140	225	45	24	-	9.5	
JTBC-C-5T	5	62.5	80-320	354	235	490	110	10	278	140	225	45	28	-	11	
JTBC-C-10T	10	125	90-320	365	320	505	120	12	280	170	235	50	40	-	16	