

JTHW-C Hand Winch



Technical specialities

The cost-effective solution for a wide variety of applications, JENTAN Brake Hand Winches can be used to pull or lift loads.

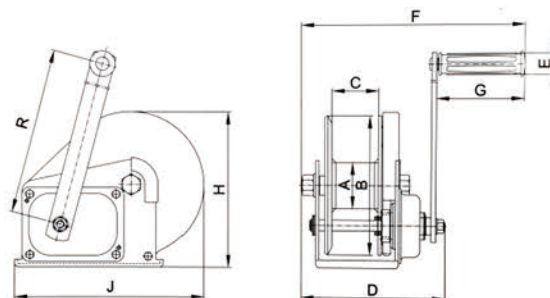
Positive action brake can hold the load in any position.

Compact, light weight and rugged construction. Mechanical components enclosed for protection.

Baked enamel finish for corrosion protection.

Rope to drum fixing clamp provided.

Available in corrosion resistant grade 304 stainless steel.



Specifications

Model	Rated capacity (lbs)	Test load (kN)	Transmission ratio	Hand operated strength (N)	Dimensions(mm)										Net weight (no wire rope) (kg)
					A	B	C	D	E	F	G	H	J	R	
JTHW-C12	1200	8	4.2:1	180	Φ48	Φ134	51	157	Φ27	273	110	156	184	208	3.7
JTHW-C18	1800	12	5:1	190	Φ60	Φ180	60	190	Φ27	288	110	203	246	319	8.1
JTHW-C26	2600	17.5	10:1	190	Φ75	Φ180	63	209	Φ27	307	110	216	294	319	10.3

JTHW-C Hand Winch



- Gears are strong, durable and electroplated for extra corrosion resistance.
- Double brake pawl for extra safety on JTHW-C model.